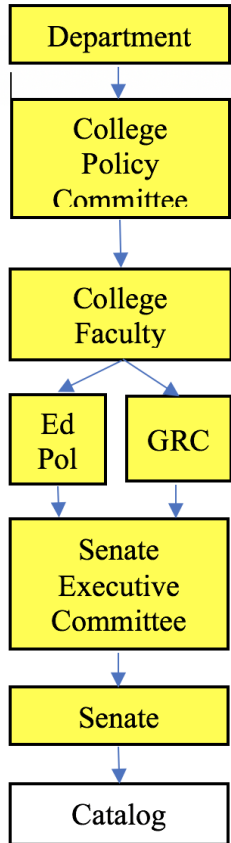
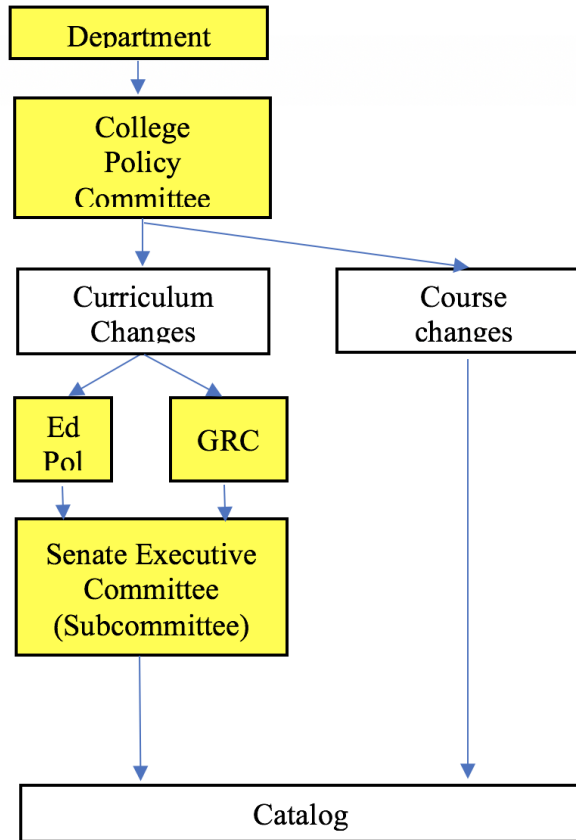


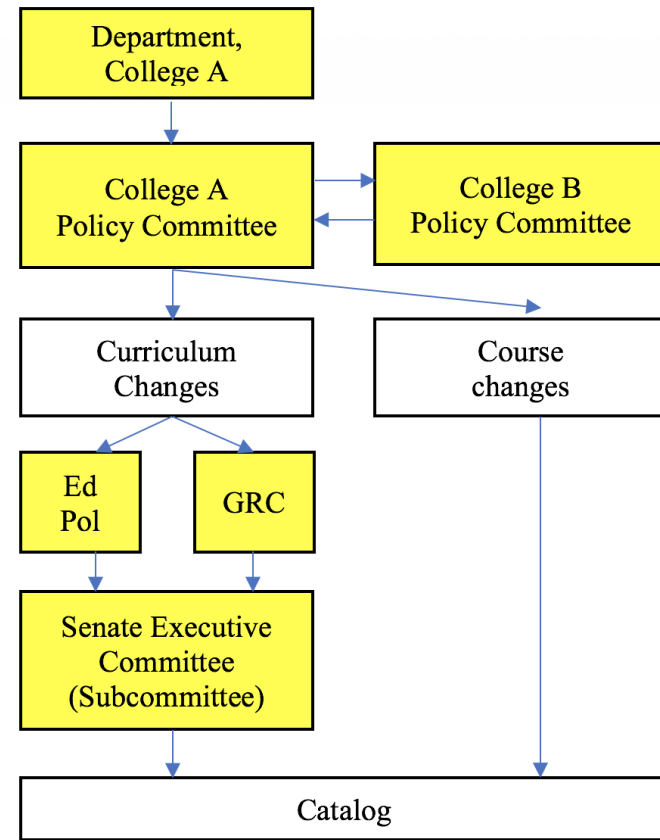
Current System



Single College Option



Multiple College Option*



PROPOSAL 1

Yellow highlighted text represents decision point.

* Used for interdisciplinary programs, when course or program has substantial participation by students from another college, when courses are pre-requisites for courses in another college, when courses are cross-listed with courses in another college, or when course might be considered college imperialism. Possibly use 14 day "silence is consent" coordination process between policy committees.

Inclusive Community Subcommittee

(Formerly University Operations)

Will focus on issues relating to Diversity, Inclusive excellence, and Equity across the Lehigh Community.

- Responsibly for Faculty input on policy and regulations pertaining to the promotion of a diverse, inclusive, and equitable campus climate.
- Prepare, for Senate approval, any related additions, changes to regulations or policies.
- Establish a sustainability Committee

Needs Members!!!

Will include:

- Global Affairs Committee
- Council for Equity and Community, Faculty Personnel Committee

Academic & Student Affairs Subcommittee

(Craig Hochbein, Jenna Lay, Jeremy Littau, Ray Pearson)

Mission and Purpose

- Responsible for faculty input on policy and regulations pertaining to the students and academics
- Prepare for senate approval, any related additions or changes to regulations or policy

To include:

- Education Policy Committee
- Graduate Research Committee
- Committee on Standing of Undergraduate Students
- Committee on Standing of Graduate Students
- Committee on Undergraduate Awards and Prizes
- Disciplinary Appeals Committee

Academic & Student Affairs Subcommittee

(Craig Hochbein, Jenna Lay, Jeremy Littau, Ray Pearson)

Recent Activities

- Set meeting times to 2 weeks before Senate Meeting
- Discussed roles of Ed. Pol. and GRC
- Invited Chairs of Ed. Pol. and GRC to be Ex-Officio members
- Reviewed Proposed R & P Changes on Transfer Credit