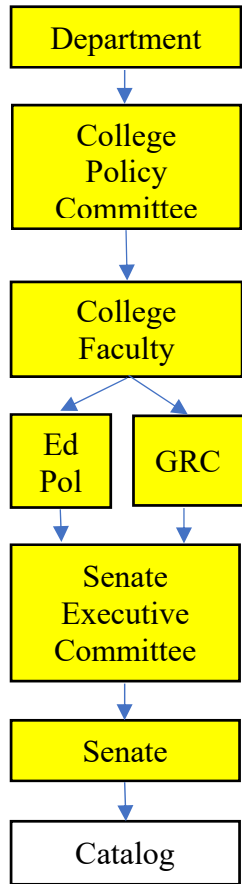
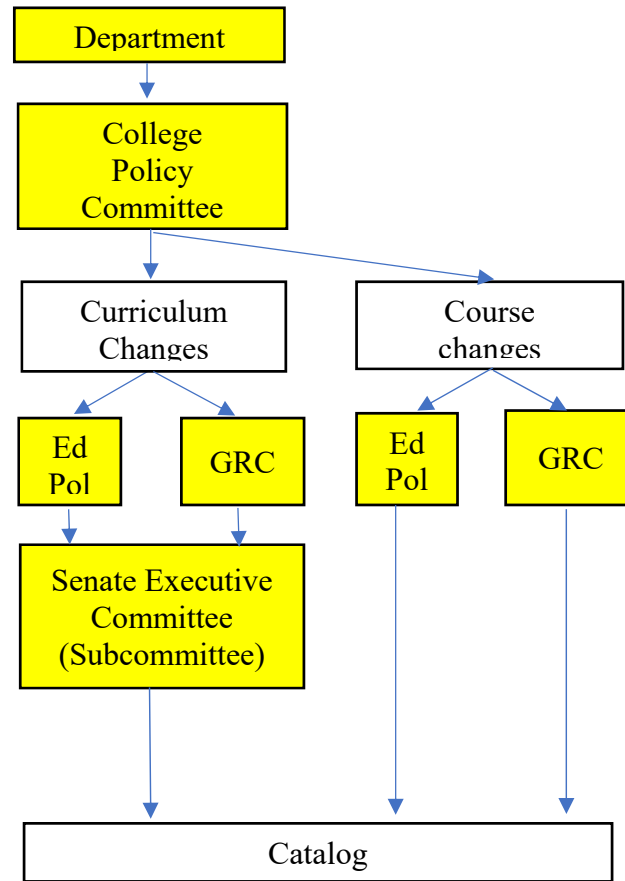


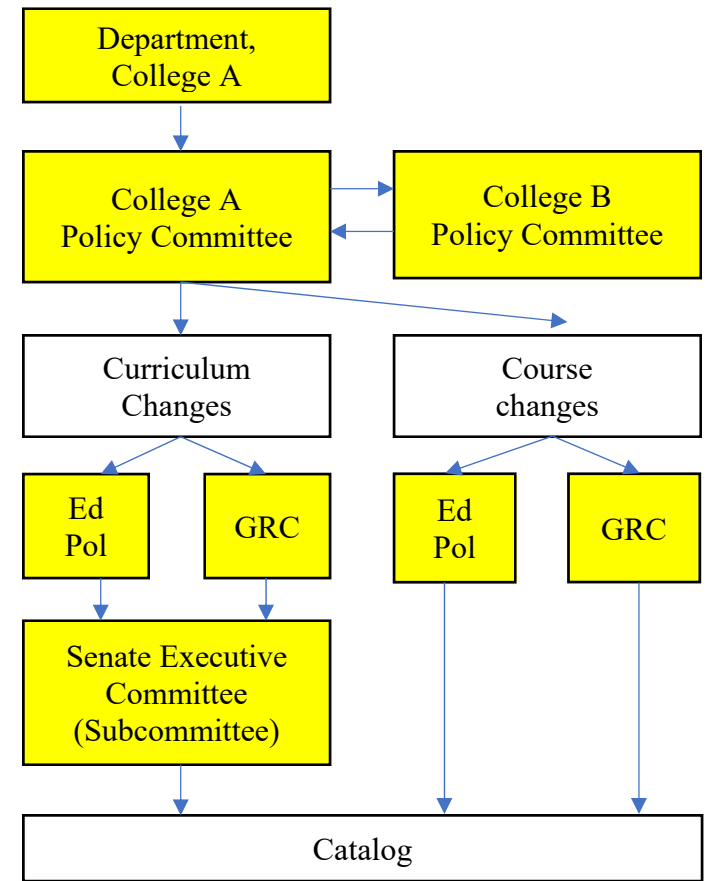
Current System



Single College Option



Multiple College Option*



PROPOSAL 2

Yellow highlighted text represents decision point.

* Used for interdisciplinary programs, when course or program has substantial participation by students from another college, when courses are pre-requisites for courses in another college, when courses are cross-listed with courses in another college, or when course might be considered college imperialism. Possibly use 14 day "silence is consent" coordination process between policy committees.